

Mountmellick Flood Relief Scheme



NEWSLETTER NO. 4

June 2024



OPW

Oifig na
nOibreacha Poiblí
Office of Public Works



**BARRY
& PARTNERS**



Background to the Study

Laois County Council, along with OPW, appointed JBA Consulting and JB Barry & Partners to assess, develop and design an appropriate, cost-effective, and sustainable flood relief scheme which aims to reduce flood risk to Mountmellick.

Progress of the Design (Sept 2023 – May 2024)

At the start of this period, a Public Information Day (PID) was held at the Mountmellick Development Association (MDA) on 12 September 2023. The event gave the opportunity for the public to meet the Project Team including representatives from the Office of Public Works, Laois County Council, and the designers JBA Consulting and JB Barry. The PID was well attended with 88 members of the public attending the event which ran from 3pm to 8pm.

The event was reported in the press.

The event included a number of posters showing the details of the layout and details of the preferred option and the reasons why it had been chosen.

As well as conversations responding to questions during the PID, 16 questionnaires and emails were received with follow-up questions and comments. The comments from the public were noted and the preferred option was amended and developed further.

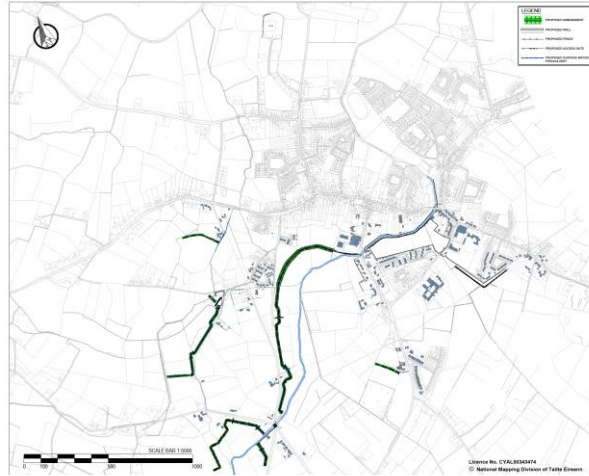


Fig 1: Preferred Option at PID

Design Development

The design has been developed further in preparation for submission to An Bord Pleanála under Part 10 of the Planning and Development Regulations 2001. Laois County Council has liaised with a number of residents or groups of residents to address their concerns.

Consultation with Environmental Authorities

The importance of both environmental and heritage constraints have been considered and liaison has taken place with various statutory bodies.

These include National Parks and Wildlife Service relating to fauna and flora, Inland Fisheries Ireland for aquatic species and hydromorphology and the National Monuments Service for above ground heritage and underground archaeology.

It may have extended the Stage 1 programme period, but to ensure the protection of any heritage features, two specialist surveys have been completed to inform the planning design. These include a geophysical survey within the areas of the proposed works which would confirm the location of any heritage features that exist below ground level. In addition, an examination took place of the riverbeds of the various rivers and streams that would be affected by the works. Here too, the purpose of the survey was to establish the presence of any heritage features that would need to be protected.

A Conservation Engineer has also been appointed to review the design and provide guidance on ensuring the proposed scheme remains in keeping with the heritage status of the area and the existing features.

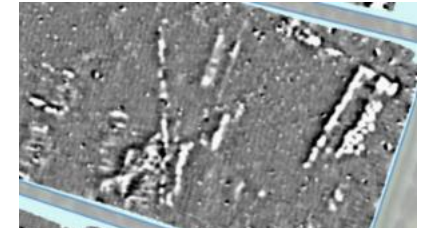


Fig 2: Geophysical Survey

Preparation for Planning

As the planning submission is being made under Part 10 of the Planning Development Regulations 2001, a full Environmental Impact Assessment Report (EIAR) is being prepared. The EIAR includes fifteen chapters covering areas such as Population and Human Health, Biodiversity, Cultural Heritage, Landscape and Visual Impact Assessment, Construction Impacts and Interaction between the various chapters. The EIAR will be accessible to the public during the planning process.

Next Steps

- Completion of planning submission documentation (Q2 – 2024)
- Planning application. (Q3 – 2024)
- Further Site Investigation to aid the detailed design. (Q3/Q4 - 2024)

Contact Us

Project Office: JBA Consulting, Unit 24 Grove Island, Corbally, Limerick

Phone: 061 - 579400

Email: info@mountmellickfrs.ie

Web: www.mountmellickfrs.ie

Activity	2019			2020				2021				2022				2023				2024				2025				2026			
	Q2	Q3	Q4	Q1	Q2	Q3	Q4	Q1	Q2	Q3	Q4	Q1	Q2	Q3	Q4	Q1	Q2	Q3	Q4	Q1	Q2	Q3	Q4	Q1	Q2	Q3	Q4	Q1	Q2	Q3	Q4
Assemble all available data including modelling																															
Site Investigation Contract																															
Environmental Constraints Study																															
Options Development																															
Ecological and Environmental assessments																															
Preparation of planning submission																															
PART 10 Planning Application with An Bord Pleanála																															
Detailed design for Flood Relief Scheme																															
Tender process for Flood Relief Scheme																															
Construction works																															

Completed Tasks

Upcoming Tasks